

# RapidDetect SDS

**Collect sufficient sample the first time with the first ever sponge saturation indicator!**

- Patent pending
- Single drug per strip
- Exclusive tests not available in any other device
- Detects up to 10 drugs simultaneously
- Tamper evident and air tight to retain remaining saliva for laboratory confirmation
- Magnification windows for clear results
- **MADE IN THE USA**

## Oral Fluid Collector (Sponge)

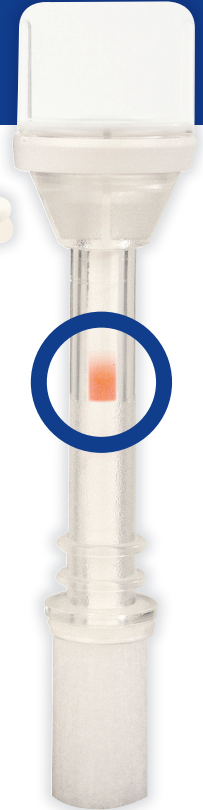
Studies have proven:

- Highest rate of drug recovery without buffer
- Highest, most consistent rate of absorption
- Reduces viscosity of saliva for faster, more consistent results

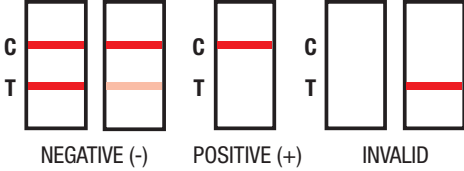
## Sponge Saturation Indicator

Typical time-determined collection methods are often ineffective when donors are smokers or users of certain prescription drugs, which can cause severe dry mouth. The sponge saturation indicator activates when sufficient sample has been collected.

- Reduce the cost of wasted devices due to insufficient sample common with other oral fluid tests
- Collectors invest only the time necessary to gather the sample and not a minute more



## Results interpretation



## Tests exclusive to this device

- Cotinine: 50 ng/ml
- EDDP: 20 ng/ml
- Ketamine: 50 ng/ml

## Market-leading drug cutoffs

- Methadone: 30 ng/ml
- Buprenorphine: 5 ng/ml

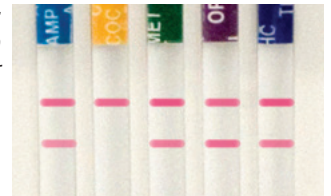
SALIVA CUTOFFS	
Alcohol (ALC)	.02%
Amphetamine (AMP)	50
Barbiturate (BAR)	50
Benzodiazepines (BZO)	10
Buprenorphine (BUP)	5
Cocaine (COC)	20
Cotinine (COT)	50
EDDP	20
Ketamine (KET)	50
Marijuana (THC)	12 50*
Methadone (MTD)	30
Methamphetamine (MET)	50
Opiates (OPI)	40
Oxycodone (OXY)	20
Phencyclidine (PCP)	10
Propoxyphene (PPX)	50

All cutoffs in ng/mL except alcohol (BAC%)

\* Parent

## SPONGE SATURATION INDICATOR

EXAMPLE:  
Presumptive positive for cocaine (COC)

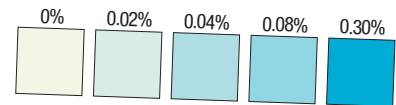


EXAMPLE:  
Presumptive positive alcohol



## Saliva Alcohol Color Chart

Alcohol strips must be read at 2 minutes as pad color may change.



FORENSIC USE OR EXPORT ONLY

Manufactured for:



301 Turman Street, Poteau, OK 74953  
888-404-0020 | Fax 918-649-1005  
www.rapiddetect.com